

PMD 13-P1.138A

File / dossier : 8.01.07
Date: 2013-08-27
Edocs: 4190845

**Supplementary Information
Oral intervention**

**Presentation from
Beyond Nuclear**

In the Matter of

Ontario Power Generation Inc.

Proposed Environmental Impact Statement
for OPG's Deep Geological Repository
(DGR) Project for Low and Intermediate
Level Waste

Joint Review Panel

September 16 to October 12, 2013

**Renseignements supplémentaires
Intervention orale**

**Présentation par
Beyond Nuclear**

À l'égard de

Ontario Power Generation Inc.

Étude proposée pour l'énoncé des incidences
environnementales pour l'Installation de
stockage de déchets radioactifs à faible et
moyenne activité dans des couches géologiques
profondes

Commission d'examen conjoint

16 septembre au 12 octobre 2013

The Woeful Inadequacy of OPG's
Cumulative Impacts
Environmental Assessment
re: the Proposed Bruce DUD

Kevin Kamps, Radioactive Waste Specialist
Beyond Nuclear
September 23, 2013

20% of the world's surface fresh water, 95% of North America's!

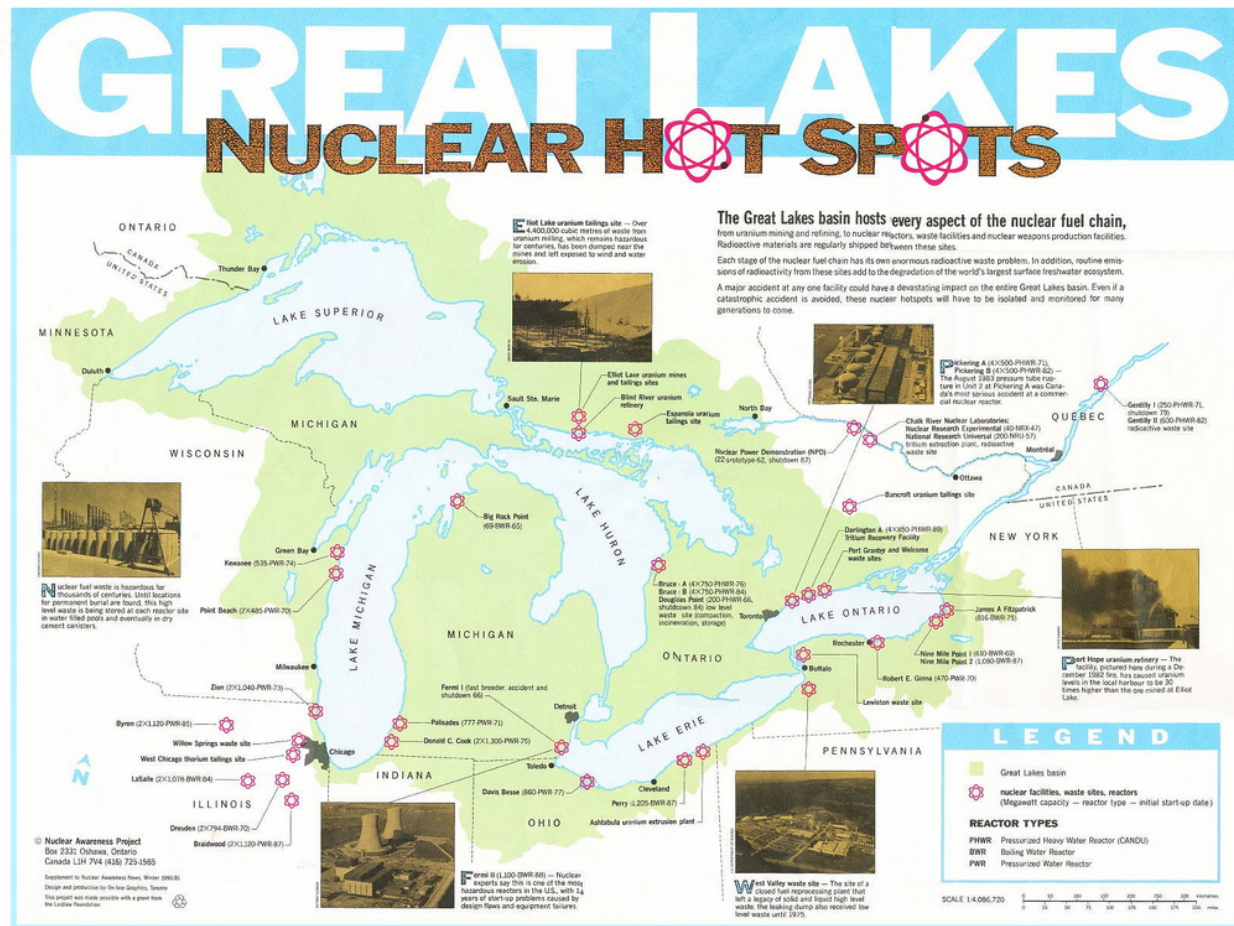


Drinking water supply for 40 million people

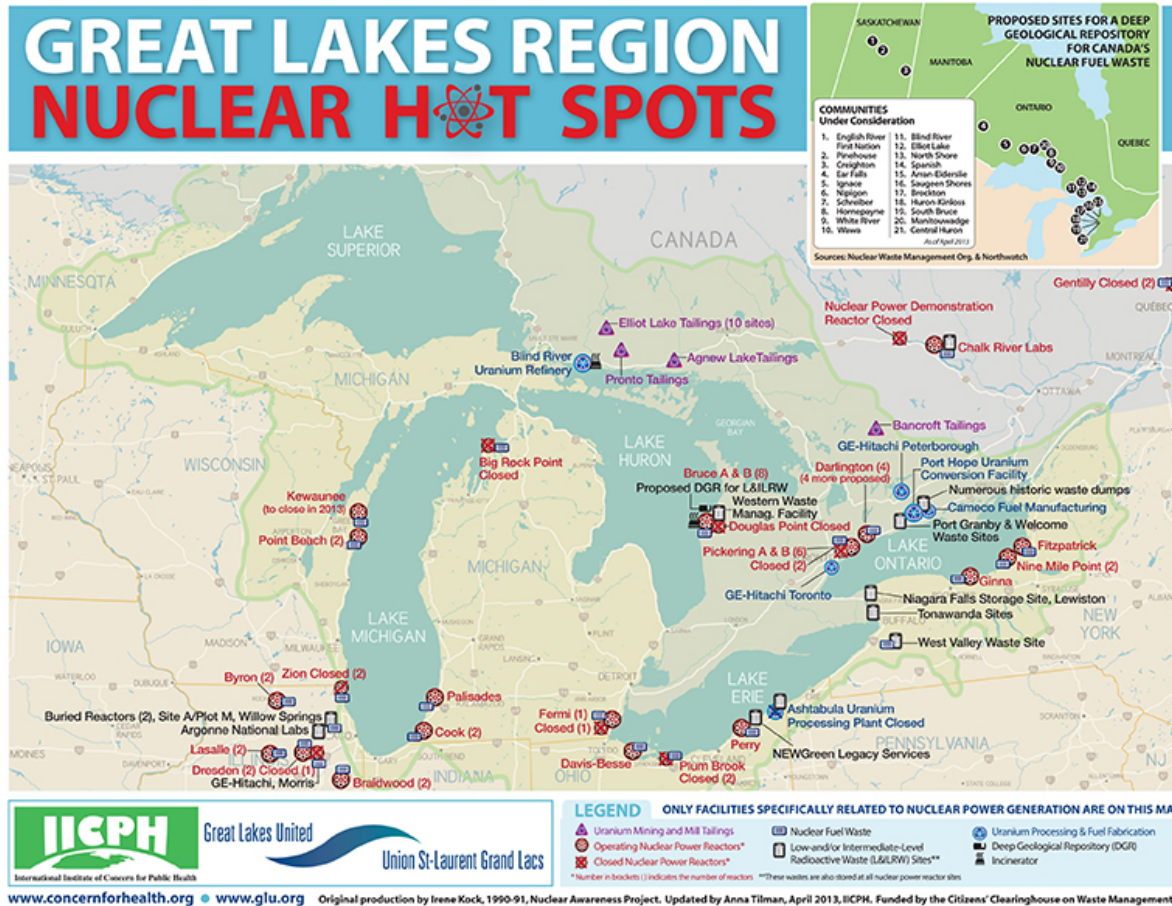


Irene Koch & David Martin

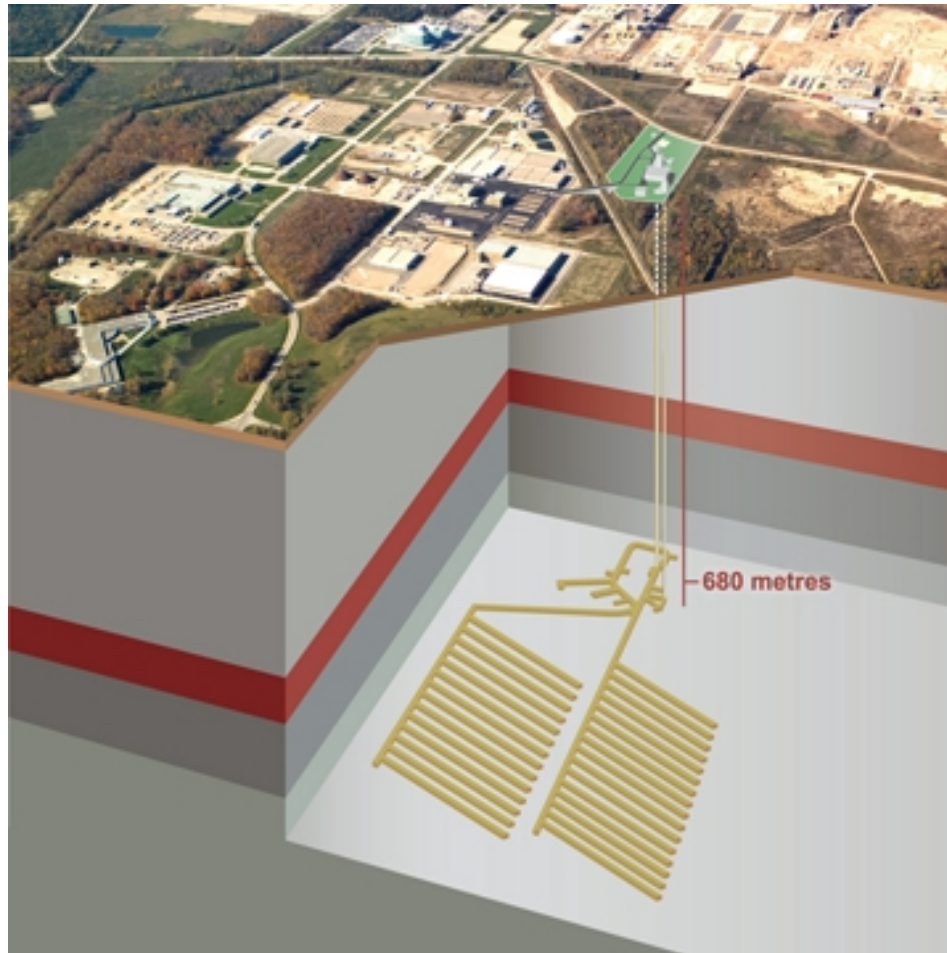
Nuclear Awareness Project, 1990-1991



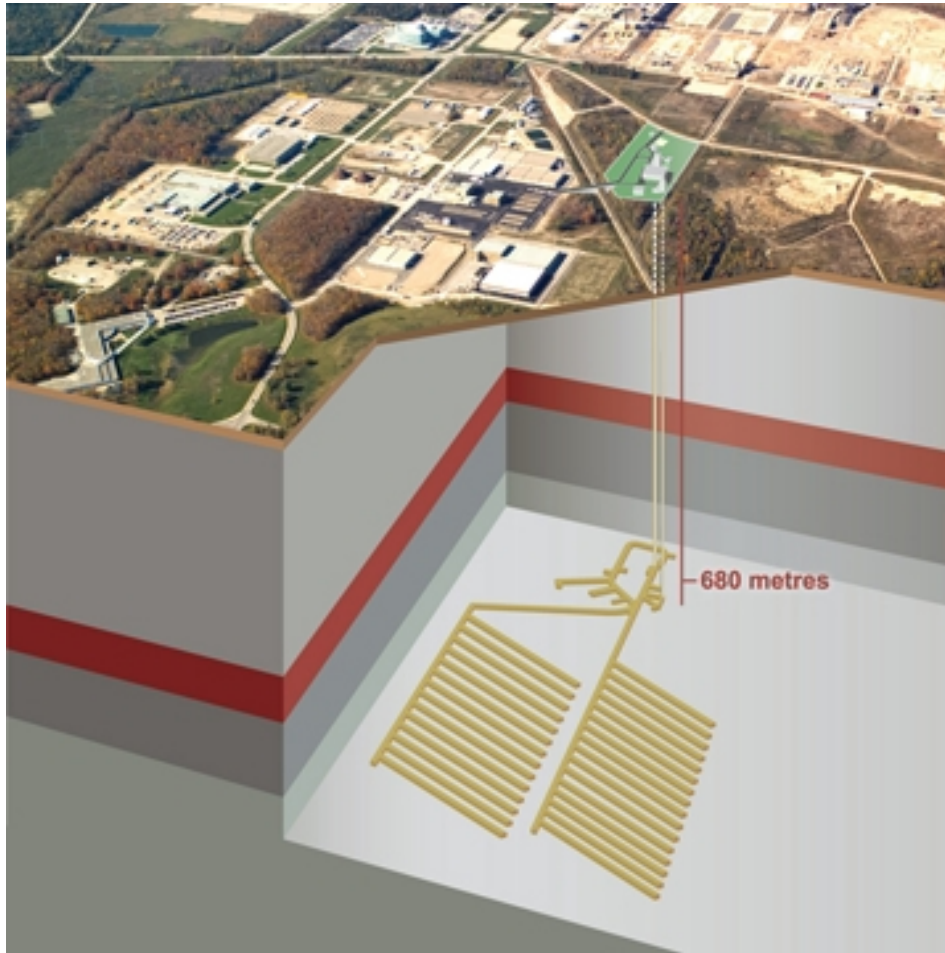
Anna Tilman, IICPH & John Jackson, GLU, 2013



DGR1, or DUD1: Ontario's "low" & "intermediate" level radioactive wastes (from 20 reactors)



DUD2:
Canadian *National* High-Level
Radioactive Waste Dump (from 22 reactors)



HLRW bound for DUD2, including from:

Gentilly 1 & 2, Quebec



Point Lepreau, New Brunswick



Lake Michigan-Huron

Lake Michigan basin



Lake Huron basin



Kewaunee atomic reactor, n.e. WI



Point Beach Units 1 & 2, n.e. WI



Zion Units 1 & 2, n.e. IL



Cook Units 1 & 2, Bridgman, s.w. MI



Palisades atomic reactor, Covert, s.w. MI



Big Rock Point Charlevoix, n.w. MI



Blind River Uranium Refinery, North Channel of Lake Huron, Algoma District, Ontario



Uranium mines and mills:
Elliot Lake (10 separate sites),
Pronto, and Agnew Lake



Great Lakes air-shed: nearby atomic reactor radioactive fallout on the basin

Byron, IL



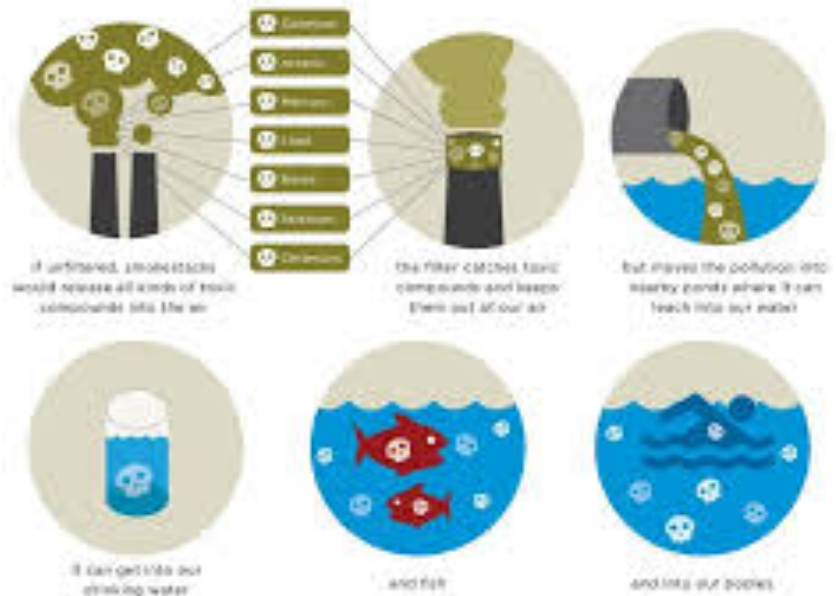
Braidwood, IL



Airborne fallout & waterborne outflow of radioactive, toxic chemical, and hazardous environmental pollutants from non-nuclear facilities



HOW TOXIC COAL POLLUTION GETS INTO OUR WATER



Airborne & waterborne toxic chemical & radioactive emissions from non-nuclear facilities

Fracking



Tar sands crude (Enbridge Line 6B)



Coal-burners on Lake Erie shore

Detroit Edison's Monroe Power Plant, S.E. MI



OPG's Nanticoke Generating Plant, Ontario



Toxic chemicals & radioactive waste barrels dumped in Lake Superior



Half-century of coal ash dumping in Lake Michigan: *S.S. Badger*



OPG's Bruce Nuclear Generating Station



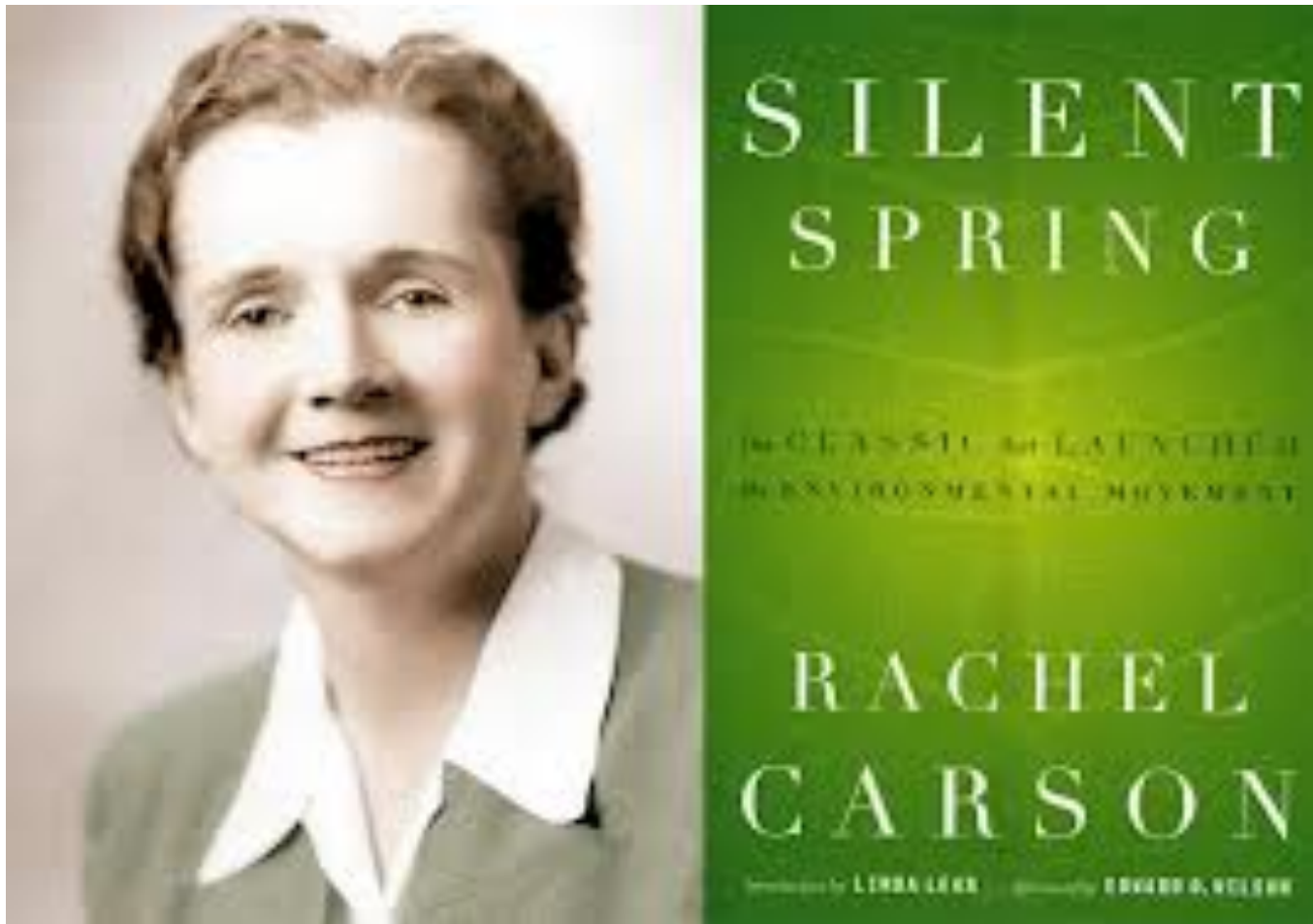
Bruce NGS

Western Waste Management Facility

1. Low level storage buildings
2. Waste volume reduction building (incinerator and compactor)
3. Transportation package maintenance building
4. In-ground intermediate level waste storage containers
5. Intermediate level waste above-ground quadricell storage
6. Used fuel dry storage facility
7. Used fuel dry storage buildings
8. Refurbishment waste storage buildings
9. In-ground storage of heat exchangers



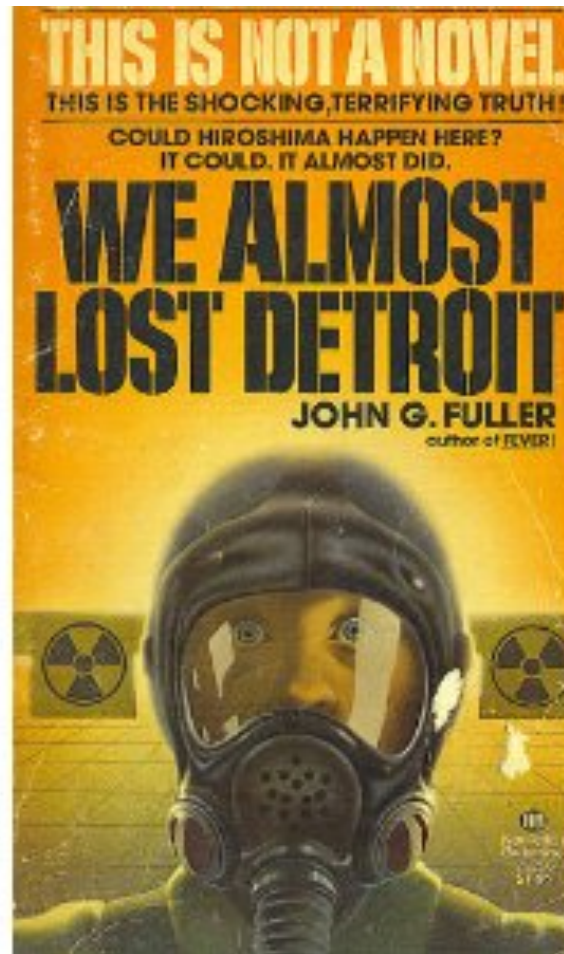
“Synergistic effects” of toxic chemicals & hazardous radioactivity



Detroit's "Cancer Alley"



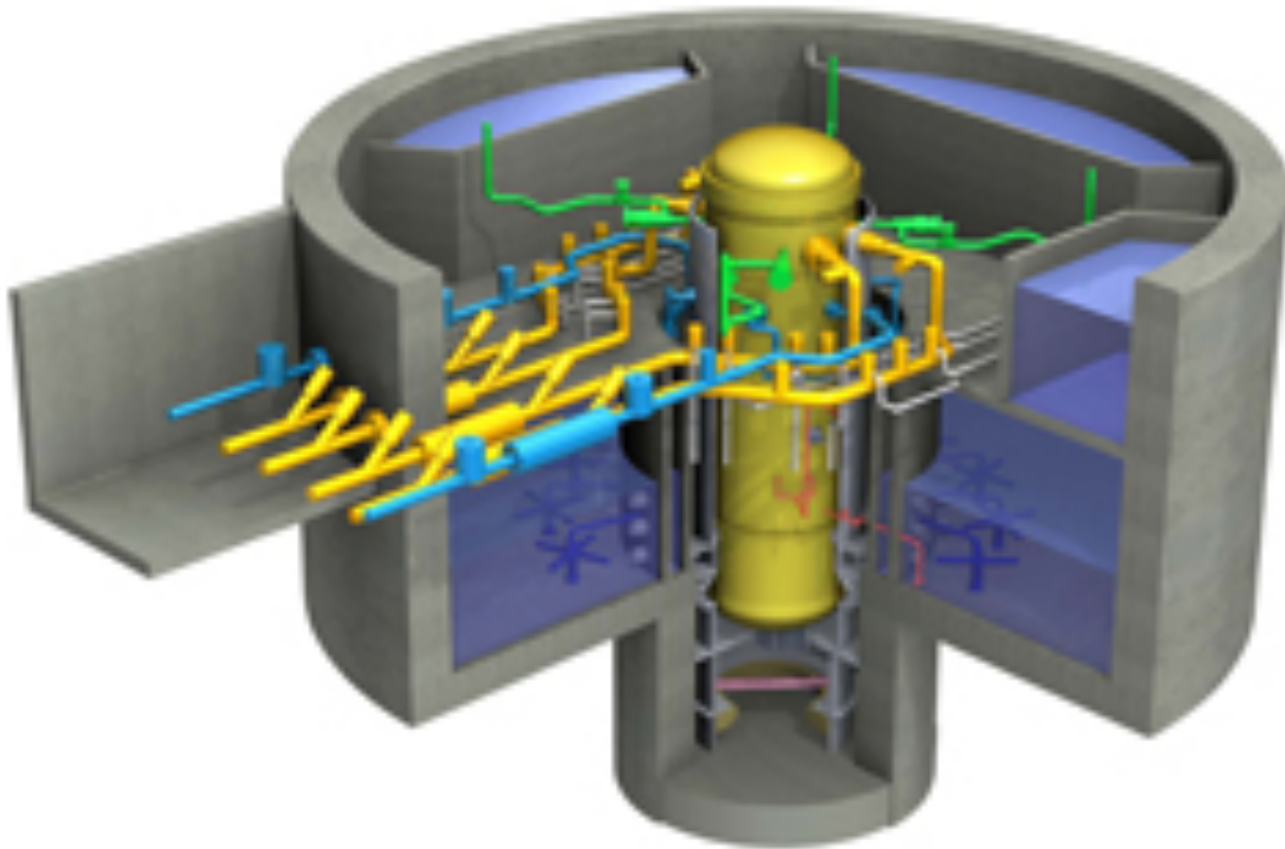
Fermi 1, Monroe Co., MI



Fermi 2



Fermi 3?!



Davis-Besse, Oak Harbor, OH



Plum Brook research reactors, Sandusky, OH



Perry, OH



NewGreen, OH

NEWGreen Legacy Services, Inc.

www.newgreenlsi.com 3715 Parmly Road Perry, Ohio 44081



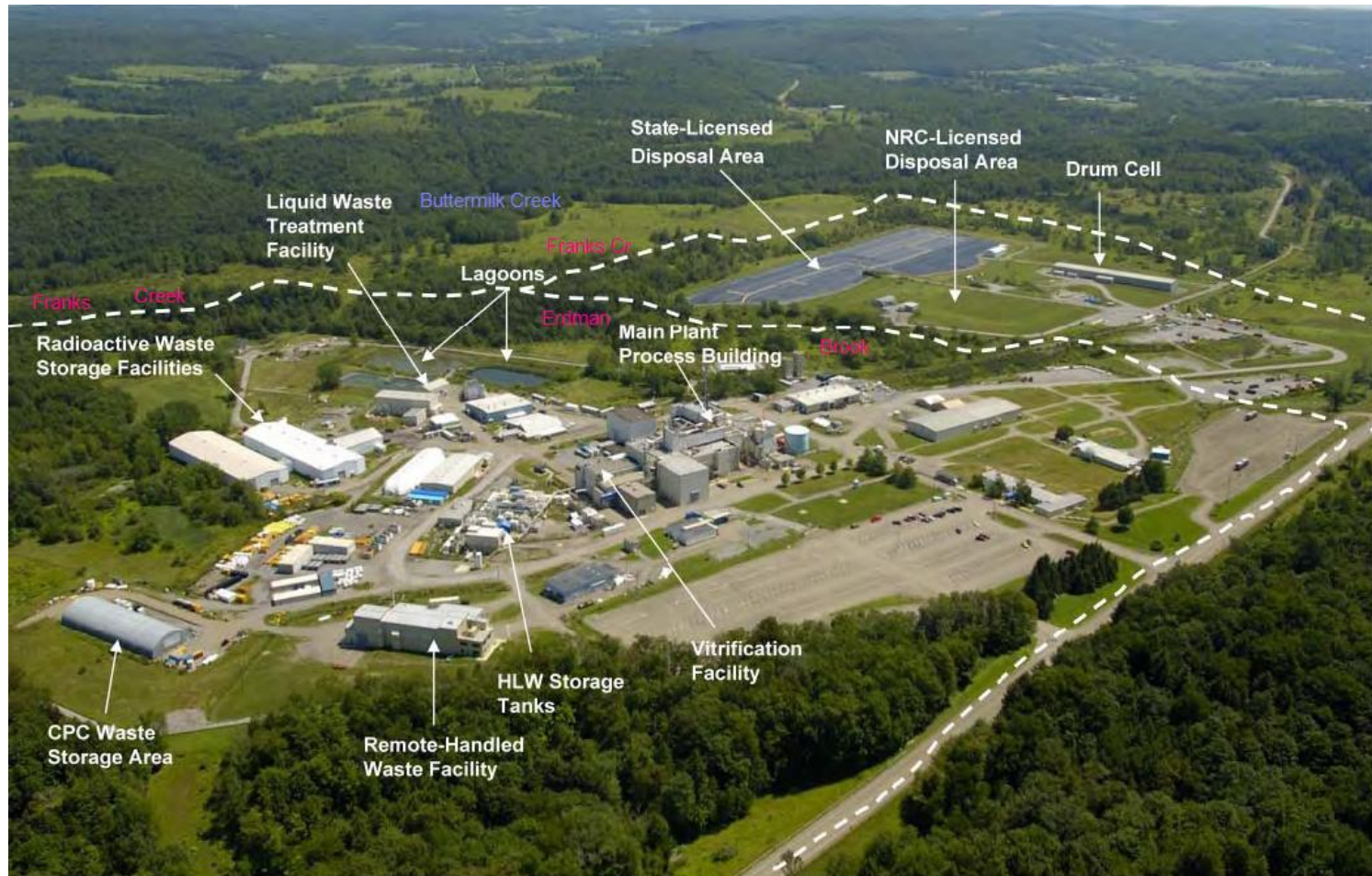
1-877-900-1763 Toll Free
1-440-259-1763
1-440-259-1917
1-440-259-1765 FAX



GREAT LAKES NUCLEAR SERVICE CENTER

Major Equipment Repair and Decontamination Services

West Valley, NY



Lake Ontario: OPG CANDUs

Pickering (X 8)



Darlington (X 4 + ?)



Darlington Nuclear Generating Station (Photo Courtesy of Ontario Power Generation)

Lake Ontario: Port Hope uranium conversion & fuel manufacturing



Lake Ontario: Upstate NY atomic reactors

Ginna

**FitzPatrick +
Nine Mile Point 1 & 2**



Quebec: St. Lawrence River

Gentilly atomic reactors

Bruce radioactive steam generator shipments



The Detroit News

Conclusion

OPG's cumulative impacts EA is fatally flawed, and should be withdrawn. The proposed Bruce DUD for "low" and "intermediate" level radioactive wastes should be blocked, given the significant cumulative effects from radioactive and toxic chemical hazards already suffered by residents of the Great Lakes, let alone the risks which would flow from the proposed Bruce DUD(s), both "low-/intermediate-" and high-level.