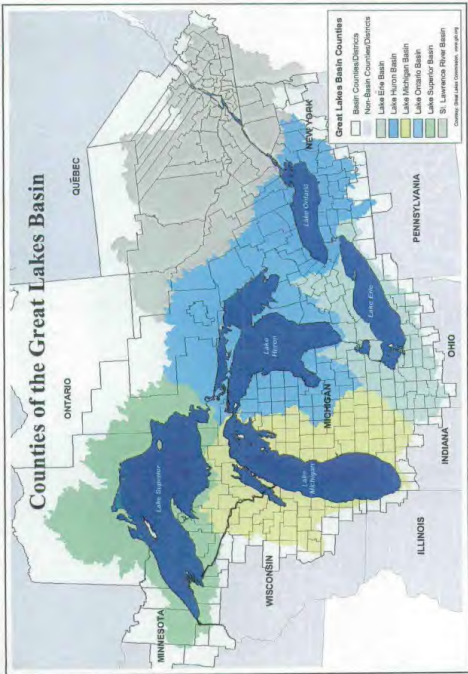


# Counties of the Great Lakes Basin



# Great Lakes Basin

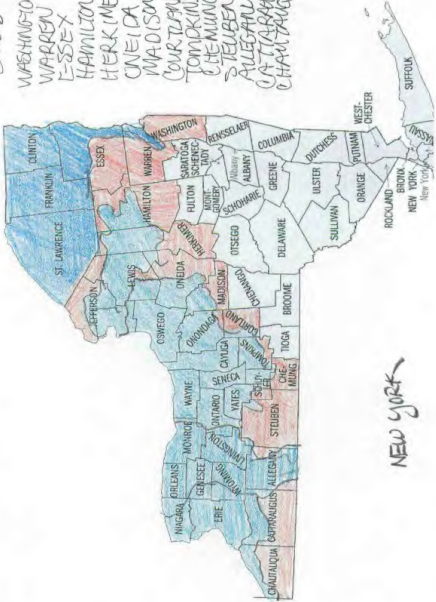


# STATE POPULATION 2003 19, 190,115

WASHINGTON 64,872  
 WARREN 64,715  
 ESSEX 38,922  
 HAMILTON 5,278  
 HERKIMER 60,704  
 ONEIDA \*234,373  
 MADISON 70,182  
 COURTLAND 48,691  
 TOMPKINS \*101,411  
 CHEMUNG 90,413  
 STEUBEN 90,012  
 ALEGANY 50,562  
 CATTARAUGUS 83,354  
 CHAUTAUGUA \*137,645

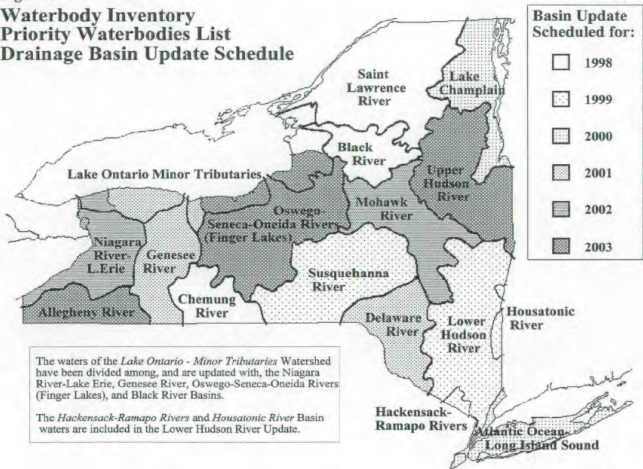
1,150,134.

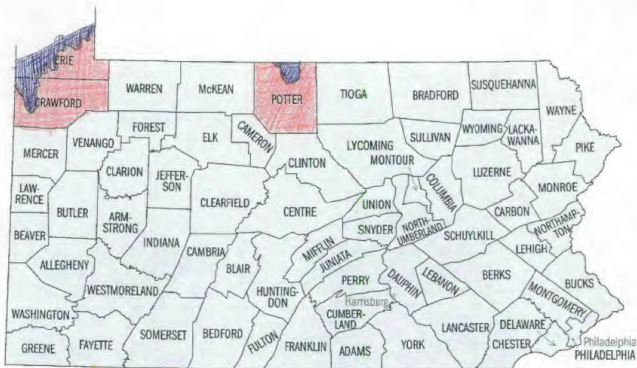
20.3490



NEW YORK

**Figure 3**  
**Waterbody Inventory**  
**Priority Waterbodies List**  
**Drainage Basin Update Schedule**





2003 STATE POPULATION  
 PENNSYLVANIA 12,365,455  
 POTTER 18,141  
 CRAWFORD 89,846  
 ERIE \*279,966  
 .03% 387,953.  
 22/03/05

Home

Up

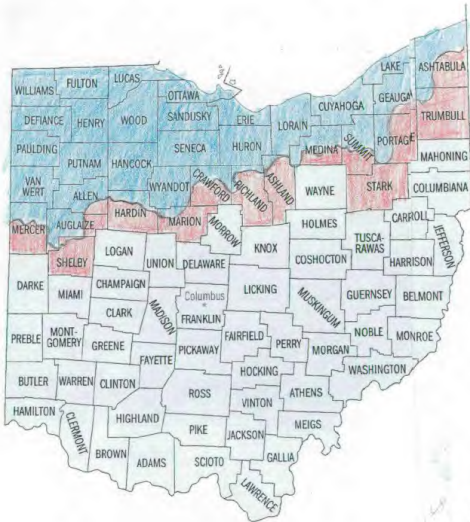


## Pennsylvania Watersheds



Map from Department of Environmental Protection

Click [here](#) for an interactive version of this map to find a watershed.



STATE POPULATION  
2003 11,435,798

ASTABULA	*103,120
TRUMBULL	*221,785
PORTAGE	*154,870
STARK	*371,519
SUMMIT	*546,773
MEDINA	*161,641
ASHLAND	53,749
RICHLAND	*128,267
CRAWFORD	46,091
MARION	661,396
AUGLAIZE	31,608
SHELBY	46,740
MERCER	48,566
	401,933

2,028,058.

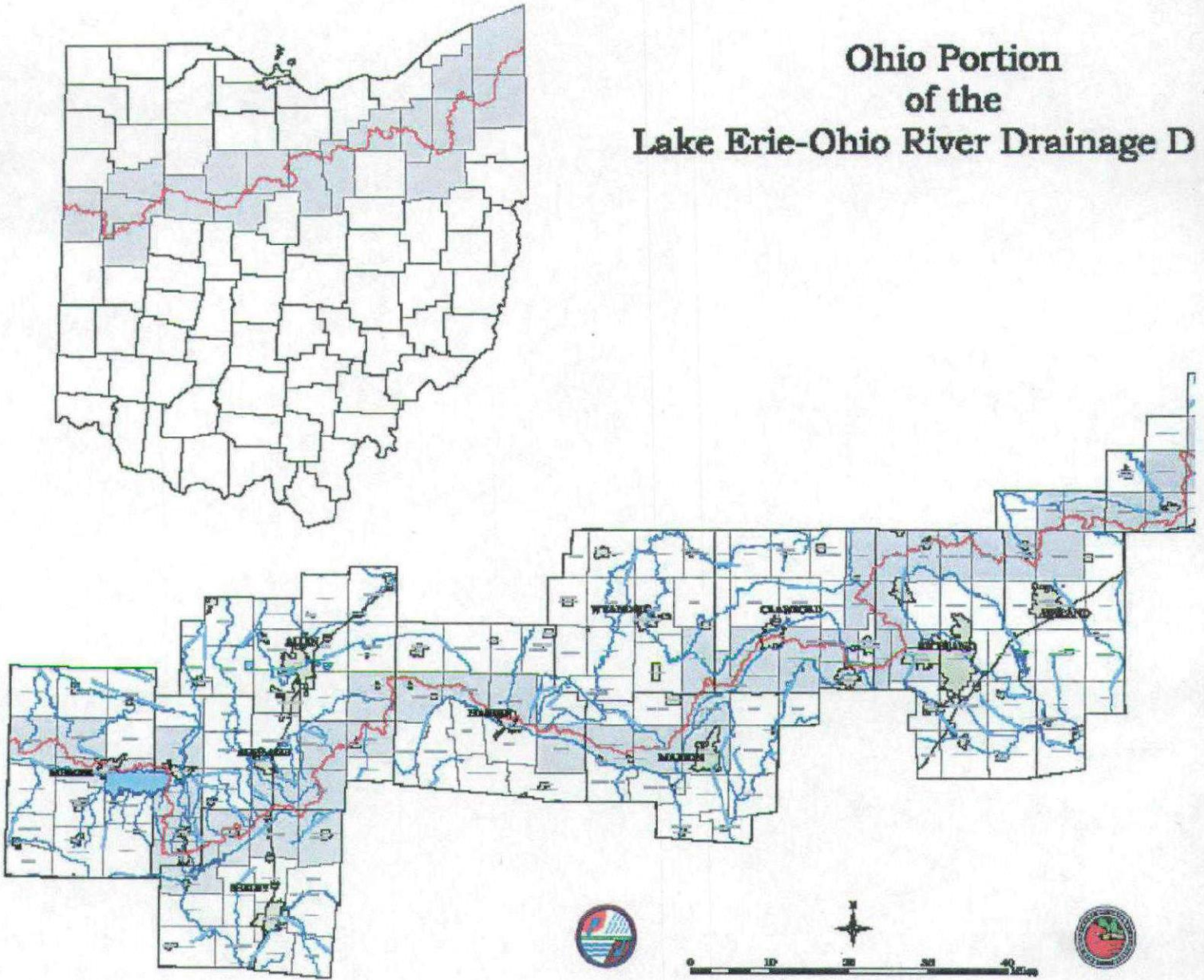
22/03/05

1796

OH10



# Ohio Portion of the Lake Erie-Ohio River Drainage D







2003 STATE POPULATION

340,909,711  
 6,195,643  
 LAKE \* 187,476  
 PORTER \* 152,533  
 LA PORTE \* 109,878  
 ST. JOSEPH \* 266,348  
 MARSHALL 46,352  
 KOSCIUSKO 75,301  
 ALLEN \* 344,152  
 ADAMS 33,592

151,632

2490



2008 STATE  
POPULATION  
12,653,544

LAKE 685,019  
COOK \* 5,351,552

---

60 36,571

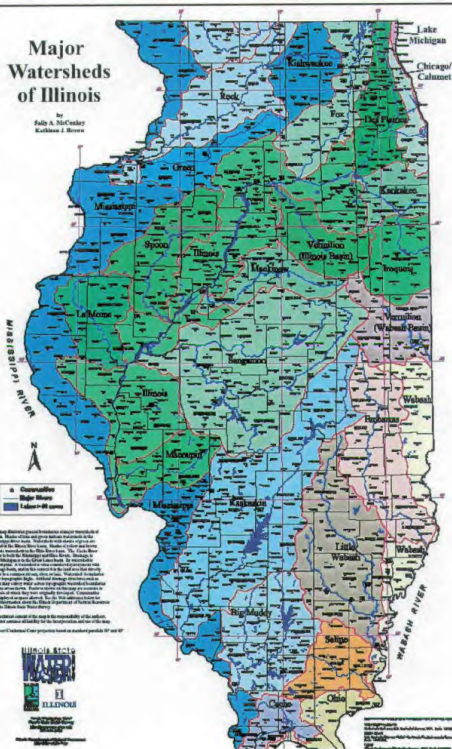
4790

# ILLINOIS

Number of counties in Illinois: 102

# Major Watersheds of Illinois

by  
 Sally A. McCusker  
 Kathleen J. Bross



•	Confluence
<span style="color: red;">—</span>	Major Water
<span style="background-color: #e0e0e0; border: 1px solid black;"> </span>	Elevation > 600 feet

The map illustrates general boundaries of major watershed basins. Major cities and major watersheds are marked on the map. Watersheds with elevations above 600 feet are shaded in light gray. Major cities and major watersheds are marked on the map. Watersheds with elevations above 600 feet are shaded in light gray. Major cities and major watersheds are marked on the map. Watersheds with elevations above 600 feet are shaded in light gray.

The nearest coast of the map is the responsibility of the author. The data are available for the information and use of the map.

Location of Watershed Color patterns based on elevation profiles 50' and 100'



Environmental Systems Research Institute  
 1000 North 3rd Avenue, Suite 200  
 Chicago, Illinois 60610  
 Phone: (312) 733-1300  
 Fax: (312) 733-1301  
 Email: info@esri.com  
 Website: www.esri.com



## Huron River Watershed Council Map of the Watersheds in the State of Michigan



Home Page | Calendar | About HRWC | Programs | Membership | Contact Us  
| Back to Watershed Page |





# Michigan's Major Watersheds

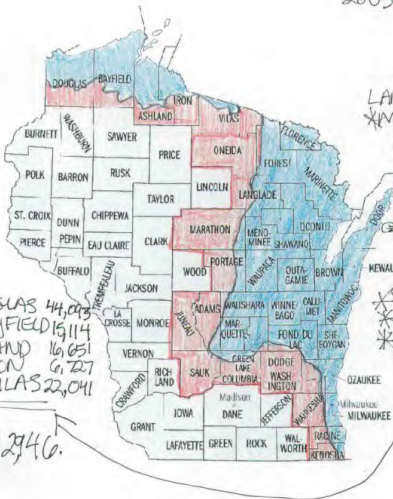


Hydrologic Station List  
 Land and Water Management Division  
 Michigan Department of Environmental Quality  
 J.S. Clark 9/1/99

- |                   |                   |                 |
|-------------------|-------------------|-----------------|
| 1 Au Gres         | 20 Manistee       | 41 Carp         |
| 1A E. Br. Au Gres | 21 Maumee         | 42 Cedar        |
| 2 Au Sable        | 22 Muskegon       | 43 Choccolay    |
| 2A Pine           | 23 Ogemunc        | 44 Days         |
| 3 Belle           | 24 Pombwater      | 45 Dead         |
| 4 Betsie          | 25 Pere Marquette | 46 Escanaba     |
| 5 Big Sable       | 26 Pigeon         | 47 Ford         |
| 6 Black           | 27 Pine           | 48 Falls        |
| 7 Black           | 28 Platte         | 49 Manistiquic  |
| 8 Macatawa        | 29 Raisin         | 50 Menominee    |
| 9 Boardman        | 30 Rifle          | 50A Paint       |
| 10 Pine           | 31 Rouge          | 50B Brule       |
| 10A Boyne         | 32 Saginaw        | 50C Michigamme  |
| 10B Jordan        | 32A Cass          | 50D Pine        |
| 11 Cheboygan      | 32B Flint         | 50E Sturgeon    |
| 12 Clinton        | 32C Shawansee     | 51 Montreal     |
| 13 Elk            | 32D Tittabawassee | 52 Munuscong    |
| 14 Grand          | 32E Chippewa      | 53 Ontonagon    |
| 14A Red Cedar     | 33 Schwaning      | 54 Pine         |
| 14B Looking Glass | 34 St. Joseph     | 55 Portage      |
| 14C Maple         | 34A Pine Paw      | 55A Sturgeon    |
| 14D Thomason      | 34B Pigeon        | 56 Presque Isle |
| 14E Flat          | 35 Stony Creek    | 57 Rapid        |
| 14F Rogue         | 36 Thunder Bay    | 58 Sturgeon     |
| 15 Huron          | 37 White          | 60 Tahquamenon  |
| 17 Kalamazoo      | 38 Willow         | 61 Two Hearted  |
| 18 Kawkawlin      | 39 Au Train       | 62 Waikita      |
| 19 Lincoln        | 40 Black          | 63 Whitefish    |

Note: Basin Numbers followed by an "A", denotes Lake Drainage that is discharge from the basin outlet.

# 2003 STATE POPULATION



DOUGLAS 44,043  
 BAYFIELD 15,114  
 ASHLAND 16,051  
 IRON 6,127  
 VILAS 22,041

132,2946.

5,472,299  
 ONEIDA 31,187  
 LANGLADE 20,788  
 \*MARATHON 127,168  
 PORTAGE 67,386  
 ADAMS 20,567  
 JUNEAU 25,029  
 SAUK 56,432  
~~GREEN LAKE~~  
 COLUMBIA 54,076  
 DODGE  
 WASHINGTON 87,115  
 \*WAUKESHA 374,079  
 \*RACINE 192,284  
 \*KENOSHA 156,209

~~171,850~~  
 24790

## WISCONSIN

## Watershed Management

Gateway to GMUs  
Contact GMU Leaders  
WI Watershed Table  
WI Water Management

## Reports

State of the Basin Reports  
Wisconsin's Water Quality Assessment Report to Congress  
Integrated Ecosystem Management (IEM) Project Summaries

## Resources

Wisconsin Waters  
Ecological Landscapes  
Innovations  
Education  
Financial Assistance  
Announcements  
Consultant's Corner  
Partners & Links  
Where You Live

## Program Links

Watershed Management  
Fisheries Management & Habitat Protection  
Drinking Water and Groundwater

About WDNR's Hydrologic Areas: Watersheds, Basins, Water Management Units (WMUs) and Geographic Management Units (GMUs)

### 1. Major Basins

**Purpose:** To identify the major drainage patterns of Wisconsin. The state is divided into 3 major river basins each identified by the primary waterbody into which the basin drains. In Wisconsin, they are the Lake Superior Basin, Mississippi River Basin and the Lake Michigan Basin.

**Relationship to HUCs:** Closely resemble the HUC "Regions" (Level 1, 2-digit Hydrologic Unit Hierarchy HUC).

**Map:** Wisconsin Major Basins (Lake Superior, Lake Michigan and Mississippi River)



### 2. Water Management Units (WMUs)

**Purpose:** These areas are hydrologically based subdivisions of the larger Major



4. Watersheds

Purpose: Used primarily to prepare reference base maps for the DNR NPS Water Pollution Abatement Program, also generally known as the NPS Priority Watershed Program. They are a further hydrologic subdivision of the Water Management Units.

Relationship to HUCs: Approximately equivalent to HUC "Watershed" (Level 5, 10-digit Hydrologic Unit Hierarchy (HUC)).

Map: 334 Watersheds

2003 STATE POPULATION

3,059,375



COOK 5,282  
 LAKE 11,160  
 ST. LOUIS 198,799  
 ITASCA 44,205  
 AITKIN 15,782  
 CARLETON 33,044  
 PINE 27,746

336,078

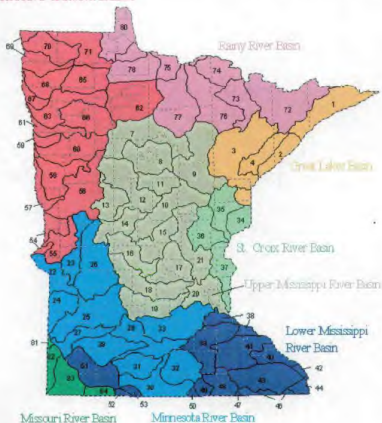
0670

MINNESOTA



## MAJOR BASINS AND WATERSHEDS OF MINNESOTA

### Red River of the North Basin



- |                                   |                                |                            |
|-----------------------------------|--------------------------------|----------------------------|
| 1. Lake Superior - North          | 29. Cottonwood River           | 57. Red River of the North |
| 2. Lake Superior - South          | 30. Blue Earth River           | 58. Buffalo River          |
| 3. St. Louis River                | 31. Watonwan River             | 59. Marsh River            |
| 4. Cloquet River                  | 32. Le Sueur River             | 60. Wild River River       |
| 5. Nemadji River                  | 33. Minnesota River - Shakopee | 61. Sandhill River         |
| 7. Mississippi River - Headwaters | 34. St. Croix River - Upper    | 62. Upper/Lower Red Lake   |
| 8. Leech Lake River               | 35. Kettle River               | 63. Red Lake River         |